

LCD weekly-programing thermostat

- ✓ Friendly interactive experience and temperature controlled easily.
- ✓ Manual/programme/temporary mode could be selected.
- ✓ weekly-programing thermostat which has 6-event everyday.
- ✓ Dual mode (internal sense-control and outer sense-limit) is supported, energy-efficient and practical. (This function is ordered separately)

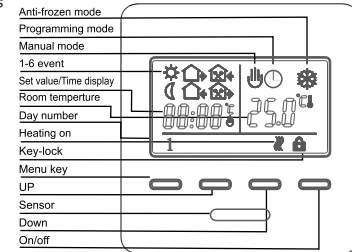
Technical data	
Voltage	AC230V±10%, 50~60Hz
Power Consumption	1W MAX
Setting Range	5~95°C (can adjust to 35°C~95°C)
Outer-limit Temperature	5~60°C (factor setting 35°C)
Switching Deviation	±0.5°C
Ambient Temperature	-5~50°C
Protection Grade	IP20
Housing Material	Anti-flammable PC
Floor Sensor	Lead wire length is 3m (ordered separately)

Version:R5M/S 1.0(07/2021)

LCD weekly-programing thermostat

The thermostat is recommended for control of electric heating devices or on/off valve actuator used in hydronic floor heating.

Display symbols



User operation

- 1) "ON" Power on/off.
- 2) At clock-controlled programme mode, press "Δ" or "▽" enter temporary control.
- 3) UP "Δ", DOWN "▽" to adjust the temperature. Press menu "☰" & UP "Δ" for 3 seconds, then enter clock set, choose modified item by pressing menu "☰", press UP/DOWN "Δ/▽" to modify the date and clock, then switch off to quit.
- 5) Press menu "☰" to choose manual mode or programme mode.
- 6) set temperature and clock display alternately, room temperature can be read out directly.
- 7) press both "▲" "▼" for 3 seconds to engage/disengage key-lock function key-lock on shows "🔒" ("🔒" this symbol disappear shows unlock)

Function:

- ☰ Manual mode
- 🕒 Clock-controlled programme mode
- 🔥 Heating on
- ⚙️ Wake-up, event 1
- 🏠 Leave(am), event 2
- 🏠 Return(am), event 3
- 🏠 Leave(pm), event 4
- 🏠 Return(pm), event 5
- 🌙 Sleep, event 6

Programming:

Press Menu key for 3 seconds to start programming

Key	Event	Symbol	Time	Modify	Temp.	Modify
📅	Day 1-5	1	☀️ 06:00	Δ	20°C	Δ
		2	🏠 08:00		15°C	
		3	🏠 11:30		15°C	
		4	🏠 12:30		15°C	
		5	🏠 17:00		22°C	
		6	🌙 22:00		15°C	
👉	Day 6-7	1	☀️ 06:00	▽	20°C	▽
		2	🏠 08:00		15°C	
		3	🏠 11:30		15°C	
		4	🏠 12:30		15°C	
		5	🏠 17:00		22°C	
		6	🌙 22:00		15°C	

Advanced setting(qualified person preferred):

Usually finished at mounting thermostat. Press "☰" key simultaneously pressing power on key When in power off state. 485Modebus(optional)

1ADJ:Temperature calibration
Press + or - key to adjust present checked value
Adjustable scale: ±9.9°C
Re-press menu key to enter to next step.

2SEN:Sensor mode
Press + or - key to choose sensor
IN:built-in. OUT:floor sensor. ALL:both Sensors, floor sensor is the limit sensor
Re-press menu key to enter to next step.

3LIT: Modify limitation value
Press + or - key to modify the temp. Limit value
Limitation range:5~60°C
Re-press menu key to enter to next step.

4DIF:switch differential setting
Press + or - key to change switch differential
Setting range:0.5~10°C.
Re-press menu key to enter to next step.

5LTP:Start anti-frozen function in power off
Press + or - key to change the current anti-frozen function
Re-press menu key to enter to next step.

6PRG:set day off mode
Press + or - to choose day off
5/2 day mode 6/1 day mode,
7 day mode and quit
Re-press menu key to enter to next step.

7RLE:Potential-free output and main power output in same/different way.
Press + or - key to change the current linkage state.
00:in same way. 01:in different way.
Re-press menu key to enter to next step.

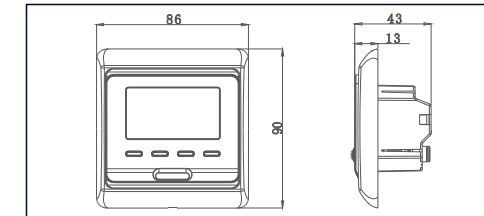
8DLY:Delay time of potential-free output
Press + or - key to change linkage delay time
Range:0-5min.
Re-press menu key to enter to next step.

9HIT:Max. Temperature setting
Press + or - key to change the Max.value
Range:35-95°C
Re-press menu key to enter to next step.

AFAC:Reset to factory setting
Press + key for 3 seconds till showing ---
Reset to factory setting
Switch off for saving

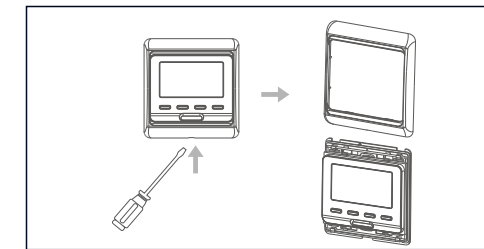
LCD weekly-programing thermostat

Dimension:mm

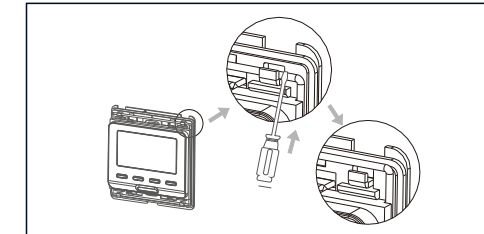


Mounting steps:

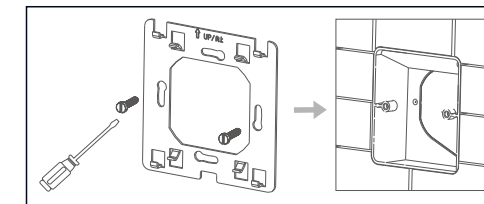
- 1 Release the front cover by inserting a screwdriver into bottom crack.



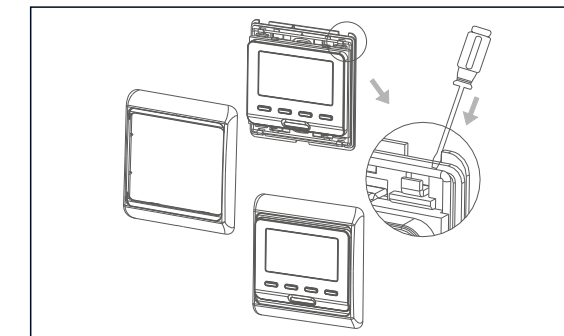
- 2 Take the backing plate apart according to the following diagram.



- 3 Mounted the backing plate in the wall socket by screwdriver.



- 4 After connect wires(see right diagram),the thermostat mounts on the backing plate and remounted the cover and frame.



Selection Table

Model	Current	Application
703	3A	A NC/NO dual-output + Weekly programming
703S	3A	A NC/NO dual-output + Weekly programming+ 485Modebus(optional)
703	3A	A NC/NO dual-output + Weekly programming+ Potential-free output
703S	3A	A NC/NO dual-output + Weekly programming+ Potential-free output + 485Modebus(optional)
716	16A	Built-in & floor sensor, floor limit sensor + Weekly programming
716S	16A	Built-in & floor sensor, floor limit sensor + Weekly programming + 485Modebus(optional)

Mounting Instructions

Sensor Failure

E0:Built-in sensor short-circuited or disconnected.E1:External sensor short-circuited or disconnected. When shows E0/E1 error, thermostat must be checked till the error is eliminated

Connecting Diagram

The thermostat operates in full capacity in areas with the altitude of less than 2500 above sea level. Power rating of external load should be less than or equal to 80% rated power of the thermostat in areas with altitude of 2500m to 4200m.

